

Capability Statement



SGKS ARCH

© SGKS ARCH 05-2026



Who We Are

‘Designs that demand attention. Delivered to live and endure.’



SGKS ARCH is a full-service architectural and interior design studio based in South Melbourne. We believe exceptional architecture inspires, connects, and transforms. Under Henry Sgourakis' leadership, our firm is recognized for bespoke, innovative, and sustainable design. Our team of experienced creatives is dedicated to redefining spaces — residential or commercial — through impactful, considered solutions.

Diversity and inclusion are at the heart of our studio. We know that the best ideas emerge from different perspectives, experiences, and voices. By welcoming people of all backgrounds, identities, and abilities, we create an environment where collaboration thrives, and every project reflects empathy, relevance, and depth.

With over 15 years of experience in architecture and development, Henry and his team combine creative vision with strategic insight, delivering projects that are both aesthetically striking and practically executed. SGKS ARCH's involvement across development ensures each project is meticulously realized, accessible, and thoughtfully designed.

Our commitment to excellence has earned a reputation for innovation, precision, and landmark projects. We carefully craft every detail, consistently surpassing client expectations, while cultivating a culture that values people as much as design.

Driven by a legacy of success and a dedication to meaningful, human-centered architecture, SGKS ARCH seeks collaborators who share our passion for transformative, forward-thinking design.

Who We Are



Henry Sgourakis
Architect. Designer. Creative.
Founder & Director, SGKS ARCH p/l

Henry Sgourakis is not your typical architect. With over 15 years leading high-impact projects across architecture, design, and property, he blends creative precision with deep commercial understanding and real-world experience. As the founder and sole director of SGKS ARCH p/l, Henry operates at the intersection of design, strategy, and delivery—bringing bold ideas to life from blueprint to built form.

Educated in architecture, management, and property (B Arch / B ID / M ARCH / Dip Property), Henry's multi-disciplinary background allows him to see beyond aesthetics—he designs for performance, for people, and for place. He's just as comfortable on-site as he is in the studio, having built under his own registration. Henry has extensive experience in delivering Specialist Disability Accommodation around Australia, and contributed expert evidence in both VIS and SDA contexts.

From large-scale residential and mixed-use developments to interiors, commercial spaces, and specialist housing, Henry brings a hands-on, full-spectrum approach. His work includes everything from masterplanning and feasibility to bespoke furniture design and manufacturing. With every project, he brings creativity, commercial clarity, and a relentless commitment to quality.

Known for his ability to solve complex problems, manage diverse stakeholders, and drive results across all stages of a project, Henry's reputation is built on trust, delivery, and design that stands the test of time.

**Operating at the
intersection of design,
strategy, and delivery
bringing bold ideas to
life from blueprint to
built form.**

What We Do

Collaborate

Collaboration is at our core, ego is left at the door. We listen and learn to authentically translate your vision. We strive to gain a genuine understanding of the people behind the project to deliver a unique and robust solution with every opportunity. Our collaborative process ensures that we also bring together the most effective and experienced team to navigate the complexities, whilst making the experience one for you to enjoy.

Craft

We don't just create buildings, we tell stories. Behind every project is a story of craftsmanship that goes beyond the aesthetic. Our principles provide solutions that efficiently resolve design challenges to maximise space, buildability and livability. Sustainability figures prominently, never an afterthought, to ensure we minimise the impact on the environment through design both now and future considerations. We balance fluidity with structure which allows us to negotiate constraints such as budget, schedule and complex site conditions.

Create

We are a design-driven collective that can innately balance creative with commercial priorities for our clients. Our shared contemporary design and appreciation of historical architecture is what generates thoughtfully considered projects. We design mixed-use, commercial and public projects that make an active contribution to Melbourne's urban fabric. Creativity is fostered in our studio – it is paramount for our clients to be inspired by every interaction

'We collaborate with purpose, craft with precision, and create with vision.'



What We Deliver



We provide tailored solutions across a diverse range of projects, varying in scale and complexity. Our services span the full project lifecycle, including design, development approvals, documentation, and delivery.

Expertise

- Residential: middle to high-end homes, multi-residential projects, and townhouse developments
- Commercial and mixed-use developments
- Specialist Disability Accommodation (SDA) / NDIS
- Small and Large scale public realm projects
- Interior design for all sectors
- Aged care and health facilities
- Social Impact and social housing
- Hotels and hospitality
- Medical projects
- Planning and master planning
- Secondary consultants within large scale projects

Expert Evidence

We provide specialist expert evidence services, including:

- SDA Independent Compliance Check (As built)
- Landscape & Visual Impact Assessments (LVIA)
- Visual Amenity Evaluations (VAE)
- VCAT evidence

Development & Advisory

Our practice has a strong history in development management, development plan submissions, and master planning, bridging the gap between design vision and commercial delivery.

**‘A collective united by
creativity and purpose.’**

Credentials & Safe Design

Victorian Government Construction Supplier Register (CSR)

SGKS ARCH is proudly pre-qualified on the Victorian Government Construction Supplier Register (CSR) in the Architectural category. This accreditation confirms our demonstrated capability, governance, financial capacity, and compliance with Victorian Government procurement frameworks, enabling streamlined engagement across public sector projects.

CSR pre-qualification is a mandatory requirement for government construction-related services, providing agencies with confidence that SGKS ARCH has already been rigorously vetted and approved to tender.

CSR Architectural Services Scope

Our CSR registration covers architectural services across all classes of buildings and structures, including:

- **Concept and detailed design**
- **Planning and building permit applications**
- **Tender documentation and tender phase assistance**
- **Construction phase services and contract administration**

Our work demonstrates the ability to operate effectively within complex, regulated environments while maintaining a strong focus on design quality, buildability, and long-term performance.

Professional Registration & Compliance

To maintain CSR accreditation, SGKS ARCH complies with all mandatory requirements, including:

- **Registered Architectural Practice with the Architects Registration Board of Victoria (ARBV)**
- **An independently assessed Occupational Health & Safety (OHS) Management System aligned with Victorian Government criteria**
- **Ongoing compliance with legislative, professional, and ethical standards**

These credentials confirm our capacity to engage confidently with government clients, consultants, and contractors.

Trusted and Pre-qualified for Government Projects

Systems & Delivery Capability

Project & Information Management: SGKS ARCH utilises integrated project management and information systems that provide real-time oversight of programme, resources, cost control, and design coordination. Our secure IT infrastructure and robust backup systems support efficient delivery and risk management.

Quality & Safety Systems

Government-approved Quality Assurance (QA) and OHS systems are embedded across all projects, ensuring consistent delivery outcomes and full alignment with Safe Design principles.

Safe Design & Health & Safety

Safety in Design is integral to SGKS ARCH's architectural services. We proactively identify and address potential risks at the design stage to reduce hazards during construction, occupation, maintenance, and eventual demolition.

SGKS ARCH understands and fulfils its responsibilities as a designer under Victorian occupational health and safety legislation. We are committed to ensuring, so far as reasonably practicable, that the buildings and structures we design are safe and without risk to the health and safety of those who construct, use, maintain, and interact with them.

Our approach is formalised through a dedicated Safe Design Manual, supported by structured design consultation, continuous improvement processes, and ongoing professional development.

Environmental Responsibility

SGKS ARCH recognises that responsible environmental practice is fundamental to quality design. We are committed to continually improving our environmental management standards and minimising environmental impact across our operations and projects.

SGKS ARCH offers clients a low-risk, pre-qualified architectural partner with proven systems, embedded Safe Design expertise, and a strong understanding of public sector procurement, compliance, and delivery requirements.

Our CSR status, professional registrations, and robust management frameworks enable efficient engagement and consistently high-quality outcomes aligned with Victorian Government standards.

Client Voice

Pultney | Thornbury | Burwood

“Henry and the team at SKGS Architects personify excellence in the quality and delivery of their architecture services. They work hard to marry the commerciality of projects to the functionality and performance of buildings. At the same time, their designs are creative and cost effective, a rare combination in the architectural services space. SKG Architects also excel at stakeholder engagement, from satisfying client needs through to community organisations with an interest in proposed developments. Indeed, whilst they excel at assisting in cementing partnerships with their ability to work closely with diverse needs, they also are equally adept in taking steam out of a room where there is opposition to development designs stemming from misunderstandings, as well as being able to adapt designs on the run to achieve 'win-win' compromises for all parties.

I have worked with them across generic developments, through to highly specialised and large scale projects encompassing multicultural needs, First Nation partnerships, challenging zoning and overlay controls (such as flooding, height restrictions, contamination limitations), site specific challenges, rezoning opportunities, SDA NDIS developments, and a host of other matters.

Most importantly, Henry and the SKGS team approach their projects and teamwork in a genuinely collaborative, patient, and empathetic style, befitting of a somewhat industry 'unicorn' when delivering developments that are defined by quality architecture. Put simply, I love that Henry and their team are down to earth and are an arrogant free zone”.

SDA, Mixed Use and Commercial

Charles Pick – PPP Advisory

Barkly | Wategos | L'Avenir

“We have worked with Henry across three residential projects, and his work continues to impress us with its brilliance and depth. Most recently, he designed the largest project we've ever embarked on, and the results have been nothing short of extraordinary.

Henry was able to translate our vision into a design that not only meets but exceeds expectations. His work is exceptionally well-considered, detailed, and thorough, reflecting a deep understanding of both form and function, and he is passionate about design, and dedicated to his craft. Every element of our new home design felt purposeful and aligned perfectly with our brief.

Beyond his creative talent, Henry's professionalism and expertise in navigating the planning process were invaluable. He made what could have been a daunting process remarkably smooth, handling complexities with ease and ensuring everything stayed on track.

Residential Architecture + Interior

Jordy Catalano – Owner



L'Avenir

Our Projects



‘Tackling projects of diverse scale and complexity, applying rigorous design process and resolved aesthetic.’

A selection of projects have been chosen that showcase our conceptual, complete and currently active projects reflecting our passion in design and delivery of

- Residential
- Multi-Residential
- Mixed-Use
- Civic Use
- Commercial Fit-out
- Master-planning
- Specialist Disability Accommodation (SDA)

To view all our projects both large and small, please visit our website at sgksarch.com

Higher Ground



Type.	Mixed Use
Stage.	Planning Permit Approved
Engaged For.	Architecture + Design
Site Area.	2,865 sqm
Gross Floor Area.	23,600 sqm
Levels.	11
Apartments.	78

On a prominent site this proposal incorporates a varied program of retail, commercial, hospitality, childcare and serviced apartments. A future-facing project that draws on the heritage and existing character of the area. Beyond its important economic contribution, it has been carefully designed to also provide a high-quality architectural and urban design contribution for the benefit of the residents and visitors.



Joese Lane



Type.	Mixed Use
Stage.	Planning Application
Engaged For.	Architecture + Masterplanning
Site Area.	9,630 sqm
Gross Floor Area.	89,250 sqm
Levels.	13
Apartments.	298

Through Joe's Lane, SGKS successfully secured rezoning and a Design Development Overlay, offering architecturally designed apartments above a ground plane of retail, hospitality, office, and community uses. A new laneway forms the project's heart, activating public space with art, eateries, and landscaped areas for events and gatherings. Set on re-zoned industrial land in Springvale, the design balances human scale with urban density, using cascading forms, gridded façades, and natural ventilation to meet the needs of a diverse and growing community.



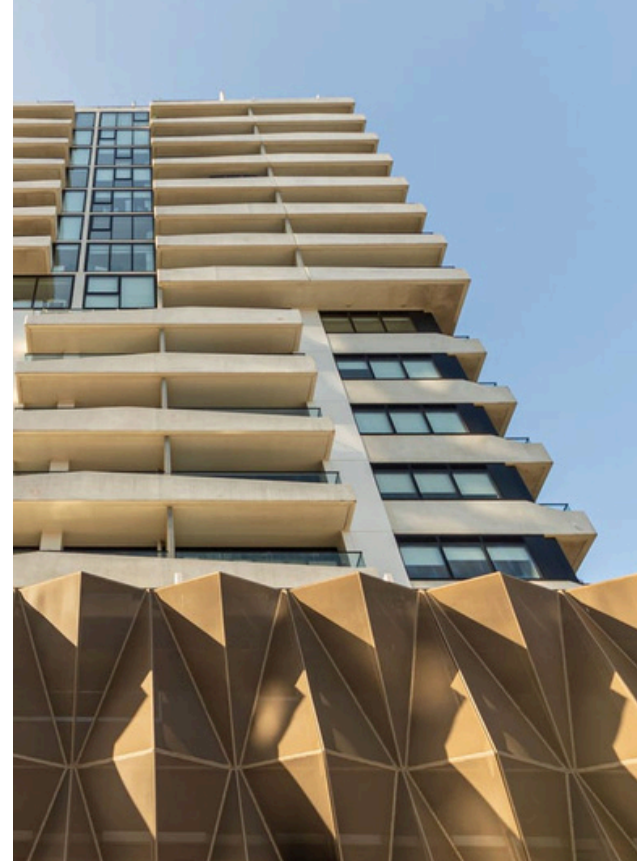
Social + SDA



Type.	Mixed Use
Stage.	Successful HAFF Application
Engaged For.	Architecture + Design
Site Area.	5,788 sqm
Gross Floor Area.	23,881 sqm
Levels.	15
Apartments.	211

Part of the Housing Australia Future Fund (HAFF), Social + SDA delivers much-needed affordable homes in Melbourne's outer east. The design features two towers that frame and transform a previously narrow and overlooked laneway into a vibrant mixed-use public corridor. The architecture is grounded in a clear grid system, with concrete and glass materials defining a contemporary modernist aesthetic. Balconies are conceived as inverse grid cutouts, providing sheltered outdoor spaces that extend living areas and foster connection to nature and community.

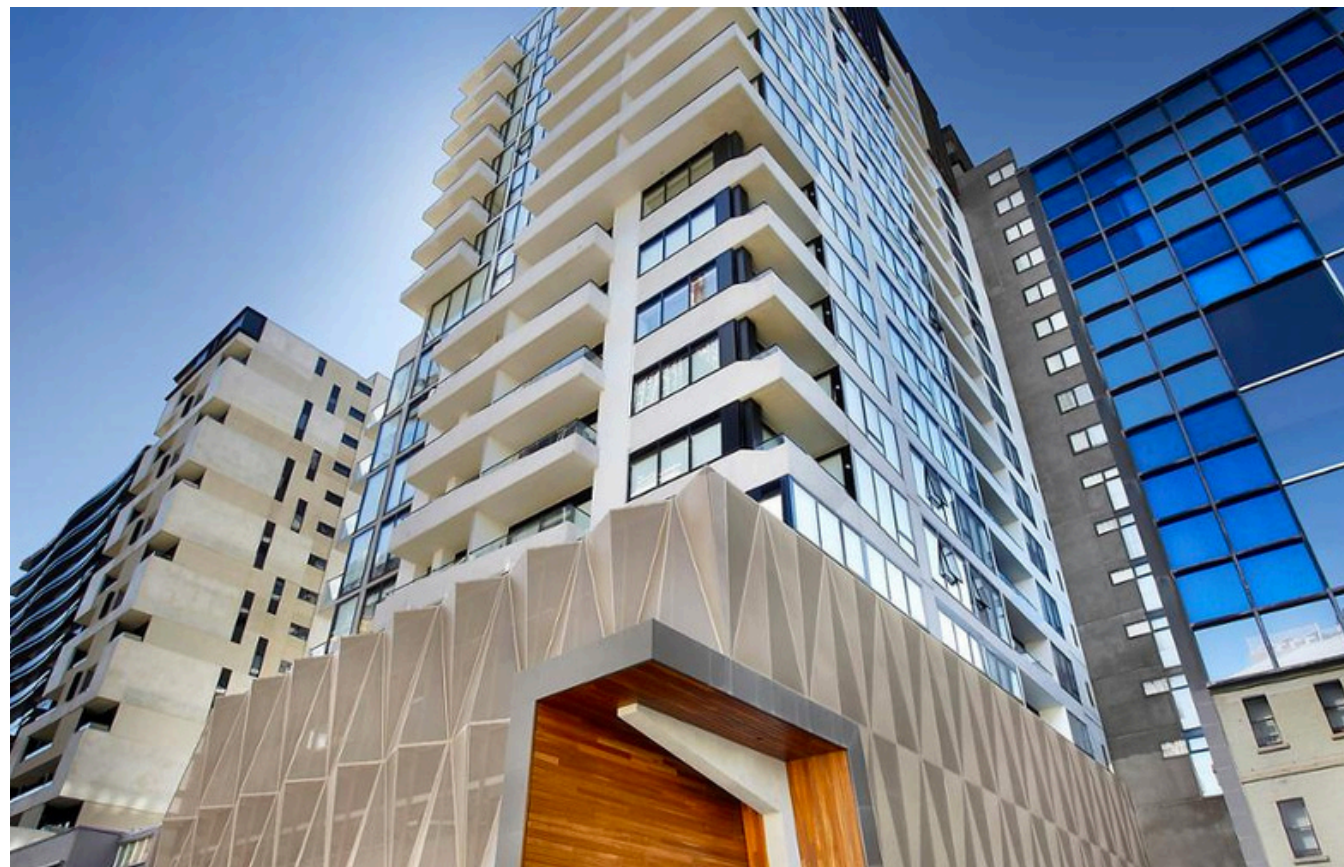




Type. **Multi-residential**
 Stage. **Completed**
 Engaged For. **Architecture + Interior Design**

Site Area. **908 sqm**
 Gross Floor Area. **16,820 sqm**
 Levels. **20**
 Apartments. **172**

Located in a landmark South Yarra setting, this residential development offers immediate access to local amenity and public transport. The design features an elegant palette of bronze hues, light paneling, sweeping glass, and metallic finishes. Retail and commercial tenancies activates the street level. A bronzed metallic podium anchors the form, while a sculpted timber entry marks the arrival point with warmth and clarity.



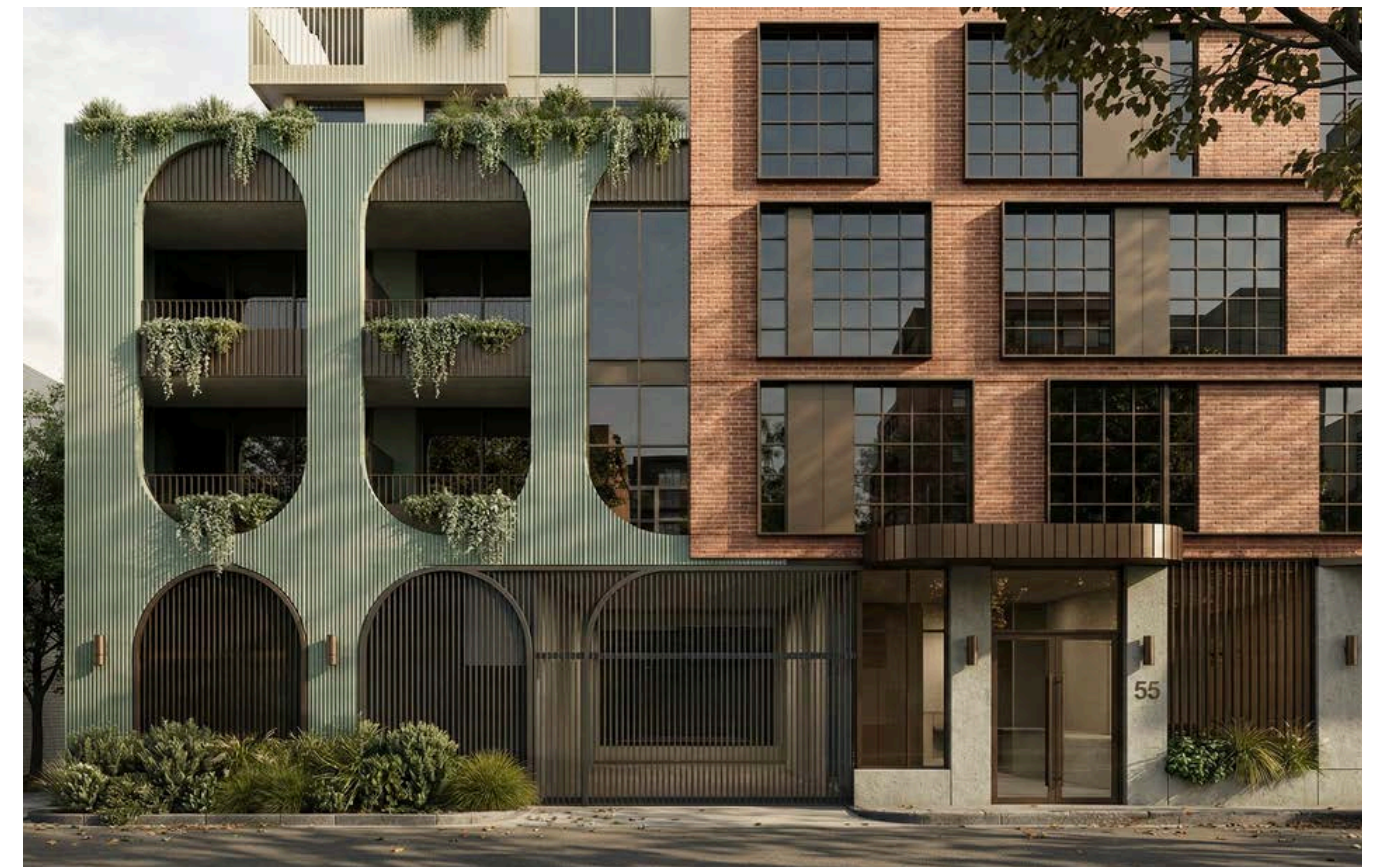
Undertaken under Sgourakis Architects Pty Ltd



Type. **Multi-residential**
 Stage. **Planning**
 Engaged For. **Architecture + Interior Design**

Site Area. **616 sqm**
 Gross Floor Area. **5,984 sqm**
 Levels. **12**
 Apartments. **37**

A bold urban gesture marks the eastern entry to Collingwood, drawing on the suburb's industrial heritage. A solid brick podium fills the compact site, softened by warehouse-style windows, fine detailing, and recessive balconies. Above, a white volume floats like a ghosted echo. Clever planning fits 37 light-filled apartments and car parking on the small island site. A richly textured green concrete arcade and brass accents frame a luxurious foyer and activate both street and laneway frontages.



Undertaken under Sgourakis Architects Pty Ltd

Park St



Type. **Residential**
Stage. **Completed**
Engaged For. **Architecture + Interior Design**

Park St is a colourful love letter to St Kilda West, reimagining two tired Art Deco flats into a radiant, contemporary family home. Blending global influences with the suburb's eclectic reality, the design strays from normality through texture, form and colour, creating an adventurous retreat full of personality and flair.

Shortlisted 'Habitus House of the Year' 2025
Shortlisted 'IDEA Awards for Colour' 2025



Main St



Type.	Mixed Use
Stage.	Planning
Engaged For.	Architecture + Design
Site Area.	915 sqm
Gross Floor Area.	12,915 sqm
Levels.	15
Apartments.	99
SDA Apartments	14 High Physical Support

Located on a complex, under-utilised site in Melbourne's outer east, this mixed-use development delivers a combination of retail, commercial spaces, residential apartments, and two levels of High Physical Support Specialist Disability Accommodation. The building provides high-quality, affordable, and accessible housing in one of Melbourne's growing satellite centers. Designed with inclusivity and functionality in mind, the project supports diverse community needs while contributing to the area's evolving urban character.



Burwood



Type.	Mixed Use
Stage.	Planning Application
Engaged For.	Architecture + Masterplanning
Site Area.	33,700 sqm
Gross Floor Area.	190,786 sqm
Levels.	19 (Tallest Tower)
Residential Apartments.	432
Student Accommodation.	776

As a major redevelopment in Melbourne's east, this mixed-use project unlocks the full potential of a large strategic site through an in-depth planning and site testing process. The masterplan investigated various configurations for a mixed-use program. This comprehensive study enabled our clients to explore development scenarios, evaluate feasibility, and optimise land use. The outcome is a flexible, staged framework that supports cohesive, long-term precinct growth with over 54,000 sqm of commercial floor space and 6,000 sqm of retail amenity.





Type. **Multi-residential**
Stage. **Pre-planning**
Engaged For. **Architecture + Masterplanning**

Site Area. **88,800 sqm**
Apartments. **87**
Townhouses. **110**

Landscape and Visual Impact Assessment (LVIA)

Located on an expansive site on Melbourne's outskirts, this project involved a thorough exploration of site layout options through detailed planning and testing. A large element of the study was the preparation of a Landscape and Visual Impact Assessment (LVIA), demonstrating how the development could be sensitively integrated into the landscape without compromising existing vegetation or the site's natural character. Multiple layout scenarios were tested to balance development potential with environmental sensitivity.



Hobart Medical Centre



Type. **Medical**
Stage. **Planning**
Engaged For. **Architecture + Design**

Nestled within the bustling heart of Hobart's city centre, this conceptual medical centre by SGKS ARCH explores the delicate balance between urban formality and the calm, restorative environment essential to healthcare spaces. The design embraces simplicity and clarity in its façade, using a rhythmic grid system that introduces a sense of order and familiarity within the dense urban fabric. This grid not only aligns with the surrounding architectural language but also becomes an important element in mediating privacy, light, and views.



Hoppers Lane



Type.	Mixed Use
Stage.	Pre-Planning
Engaged For.	Architecture + Masterplanning
Site Area.	11,005 sqm
Gross Floor Area.	44,571 sqm
Levels.	10
Apartments	244

A large-scale mixed-use development on a 18,795sqm site integrates a hospital, university accommodation, apartments, retail, and communal spaces across a vast site in a growing suburb. The design creates a vibrant, connected community hub, promoting health, learning, and lifestyle in a carefully balanced urban environment.

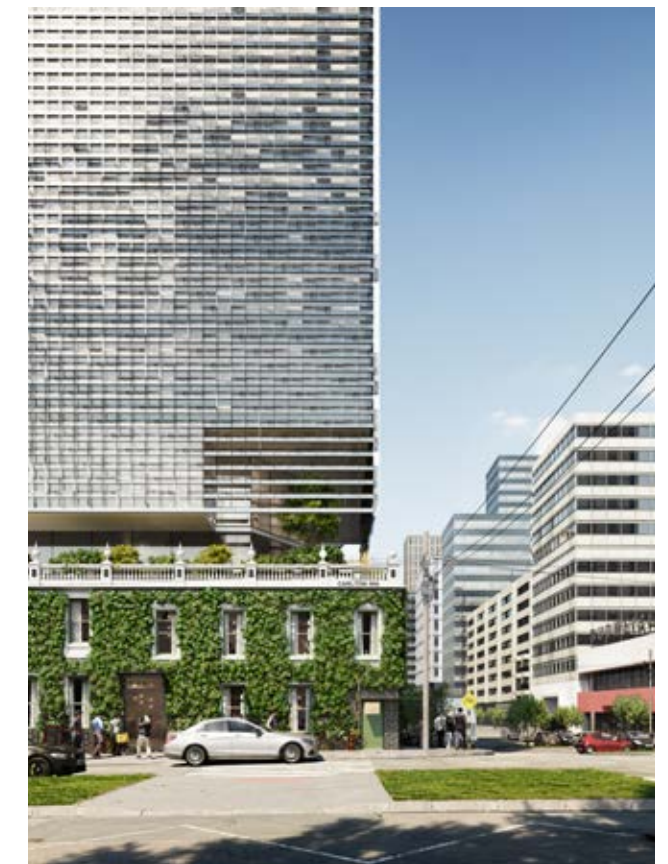
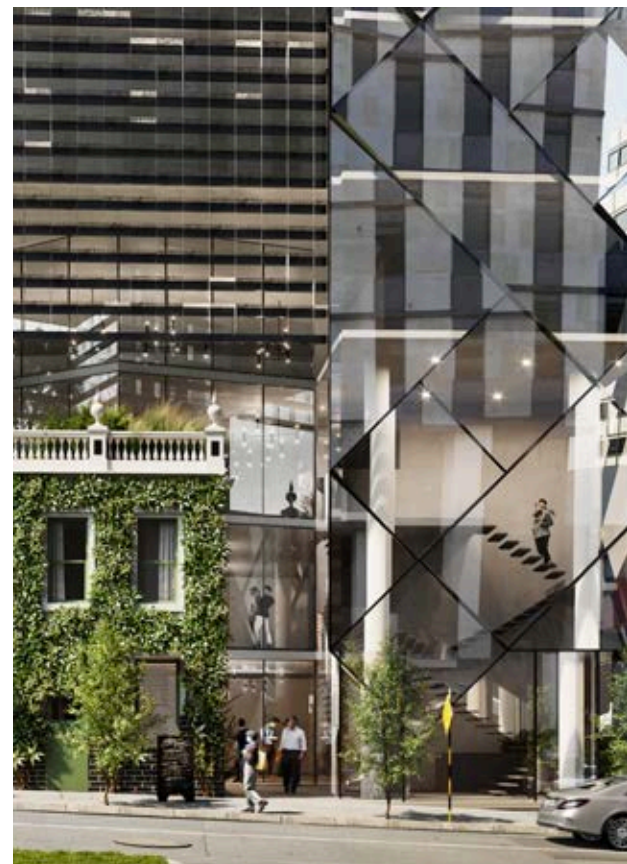


Carlton



Type.	Mixed Use
Stage.	Mediation
Engaged For.	Architecture + Design
Site Area.	459 sqm
Levels.	14

SGKS ARCH was approached to assist with a community-focused re-activation of a heritage site of significance, working with varied stakeholders in creating a unique collaboration of use and activation. The fine texture and patterning of the sun shading is created through the layering of various images of the beloved building and Carlton itself, speaking to the complexities of collective memory and how, through community, it imbues itself into our built environment.



Toorak Rd



Type.	Multi-residential
Stage.	Completed
Engaged For.	Delivery Architect
Site Area.	1,575 sqm
Gross Floor Area.	10,982 sqm
Levels.	6
Apartments.	70

Taking on the role of delivery architect for a project with existing design and permit, SGKS ARCH were charged with the documentation and overseeing construction of this 70 apartment building in Hawthorn East.

Existing planning permit and design by others



Undertaken under Sgourakis Architects Pty Ltd



Type.	Multi-residential SDA
Stage.	Construction Documentation
Engaged For.	Architecture + Interior Design
Site Area.	713 sqm
Gross Floor Area.	2,374 sqm
Levels.	4
HPS Apartments.	15 High Physical Support
OOA Apartments.	2 Overnight Assistance

Drawing from Footscray's industrial character, the design features a refined material palette of cream and white brick, galvanized steel window framing, and raw corrugated iron infill panels. Generous planting and integrated vegetation soften the robust form, creating a welcoming, livable environment. Positioned along the train line, the site offers excellent transport access and strong connection to local amenities with a retail space located on the ground floor.



Type.	Multi-residential SDA
Stage.	Under Construction
Engaged For.	Architecture + Interior Design
Site Area.	1,347 sqm
Gross Floor Area.	1,906 sqm
Levels.	3
HPS Apartments.	15 High Physical Support
OOA Apartments.	2 Overnight Assistance

Set back from the street, the design incorporates a landscaped buffer to soften the interface. The apartments accommodate high care needs while remaining adaptable. A bold yet simple material palette defines the building, with colour used to visually split the form while maintaining a cohesive architectural language. We undertook the architectural design, and interior layouts for the planning stage.

Delivery and construction managed by separate architectural firm



L'Avenir



Type.
Stage.
Engaged For.

Residential
Completed
Architecture + Interior Design

This completed residential extension and retrofit of a heritage home blends modern design with traditional materials. The extension features exposed concrete ceilings and formed skylights that bring natural light into the space. A chunky rendered form contrasts with weathered timber cladding, creating a striking contrast in materiality.



Greenfield WA



Type. **Multi-residential SDA**
 Stage. **Successful development Approval**
 Engaged For. **Architecture + Interior Design**

Site Area. **1,557 sqm**
 Gross Floor Area. **4,643 sqm**
 Levels. **5**
 HPS Apartments **25 High Physical Support**
 OOA Apartments. **3 On-site Overnight Assistance**

This proposed development in the local centre of the Muriel Ct precinct has 2 stages of 15 and 10 apartments respectively, along with street level activation. Designed to the High Physical Support (HPS) design category. The buildings will also provide spaces for On-site Overnight Assistance (OOA), to comfortably accommodate carers working on site. Extensive planting provides a welcome connection to nature and the outdoors with generous common spaces allowing for easy social connection.

Pultney



Type. **Multi-residential SDA**
 Stage. **Successful Development Approval**
 Engaged For. **Architecture + Interior Design**

Site Area. **1,096 sqm**
 Gross Floor Area. **1,702 sqm**
 Levels. **3**
 HPS Apartments **15 High Physical Support**
 OOA Apartments. **2 On-site Overnight Assistance**

Located in Melbourne's outer east, this multi-residential development is tailored to the High Physical Support (HPS) category, the residences are designed to meet the needs of those requiring intensive care, with flexibility to accommodate residents with varying support levels. The facade design thoughtfully integrates colour and texture to harmonize with the existing streetscape while emphasizing accessible and inviting entry points.



Type. **Residential SDA**
 Stage. **Planning**
 Engaged For. **Architecture + Interior Design**

Site Area. **1002 sqm**
 Townhouses. **2**

Two single-level SDA villas are positioned on a uniquely shaped yet level site with an angled boundary, allowing a shared side driveway to serve both homes. Each villa offers a similar layout and size, differing primarily in façade design and entry orientation. Designed for low-density suburban settings, the villas integrate seamlessly into the streetscape while adding architectural character to a compliant and straightforward floor plan.



Type. **Residential**
 Stage. **Planning**
 Engaged For. **Architecture + Design**

Site Area. **1,319 sqm**
 Townhouses. **4**

Located in Melbourne's north-east, this development consists of four townhouses designed to balance individual character with a consistent architectural language. Each dwelling responds to its orientation and site conditions, offering unique layouts and selections while contributing to a unified streetscape. The triangular site shape allows each residence to include a private backyard, with a shared central driveway providing access and circulation.

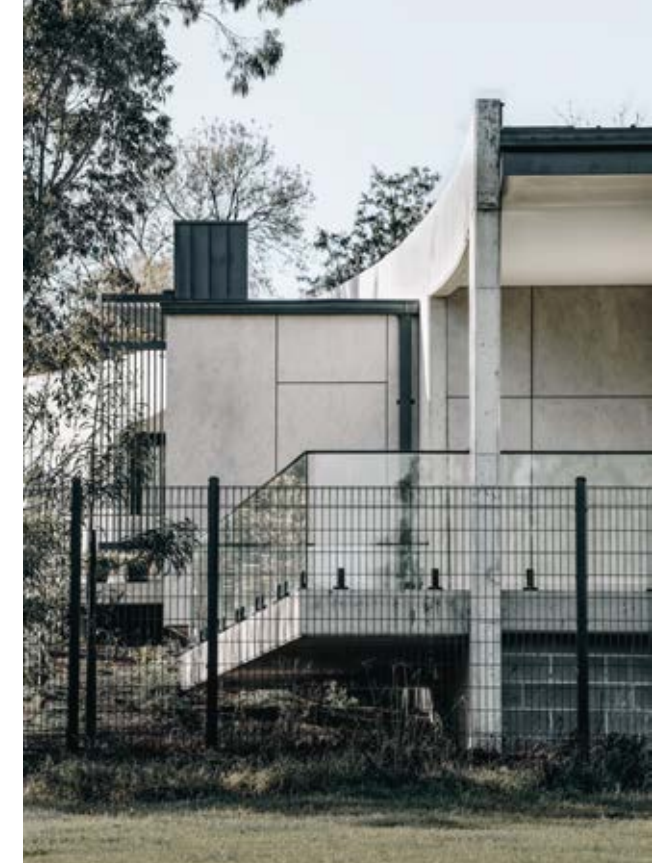


Bridge St

Type. **Mixed Use**
 Stage. **Completed**
 Engaged For. **Architecture + Interior Design**

Site Area. **2.740 sqm**
 Gross Floor Area. **942 sqm**

Located in Melbourne's inner north, adjacent to the picturesque Banksia Park, the Bridge St project is a thoughtful and elegant example of mixed-use architecture. Designed to embrace both community and tranquillity, the project brings together residential spaces, a meditation space, short-term accommodation, and a restaurant within a unified design that celebrates its natural surroundings and fosters connection.



Darebin Creative



Type. **Civic**
 Stage. **Design Development**
 Engaged For. **Architecture + Masterplanning**

Site Area. **8,971 sqm**
 Warehouses. **28**

A collaboration between SGKS, Coree Thorpe, and a team of advisors has reimagined a proposed mixed used commercial park in Thornbury as a place of wonder, creativity, and community. Anchored by a striking three-dimensional artistic treatment of the facade and its surroundings, the design invites exploration, both up close and from afar. A dance studio and café, both open to the public, enrich the space and help establish it as a local cultural hub.

Cultural Partnership

Kangaroo Ground



Type. **Hospitality**
 Stage. **Planning**
 Engaged For. **Architecture + Interior Design**

Site Area. **99,406 sqm**
 Hotel Rooms **70**
 Private Villas **12**

Located in Victoria's Kangaroo Ground, this mixed-use hospitality project combines the wonders of a winery with boutique accommodation. The design thoughtfully engages the landscape through a restrained material palette and site-sensitive forms that blend into the natural surroundings. Private villas offer secluded retreats, while an artist's residence enriches the cultural experience.



Werribee Zoo



Type.
Stage.
Engaged For.

Civic
Design Development
Architecture



The Werribee Zoo project represents a unique fusion of architectural design and civic infrastructure, reimagining the conventional cable car station as a thoughtful and site-responsive architectural experience. Working across three key nodes within the zoo, Station 1: Savannah, Station 2: Middle, and Station 3: Waterhole. The design carefully responds to the distinct ecological and visual character of each location, creating a cohesive yet varied architectural language across the site.



Sporting Ground



Type.
Stage.
Engaged For.

Civic
Pre-planning
Architecture + Masterplanning

This conceptual sporting precinct brings together a soccer and AFL footy pitch with a versatile indoor recreation facility, creating a dynamic community hub that supports both organised sport and casual use year-round.

Design credits awarded to our architectural graduates, Andrew Gallo and Rupert Beaufoy



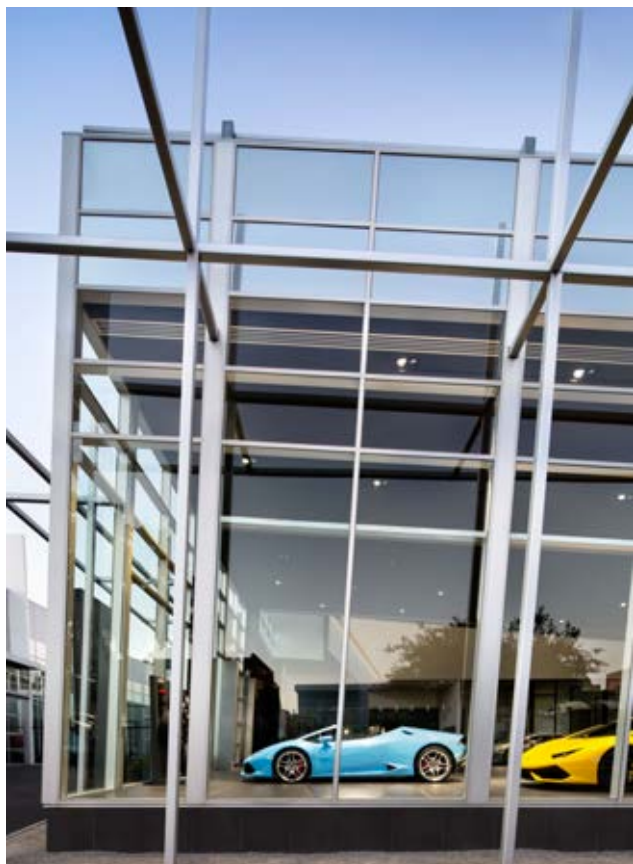
Lamborghini



Type. **Commercial**
 Stage. **Completed**
 Engaged For. **Architecture + Design**

Site Area. **2,350 sqm**

To the street, the project presents a sleek combination of glass and steel, its unexpected angularity giving the built form a feeling of movement. The two buildings share design elements, but they each have a distinct character. A lightweight framework of beams and pillars traces the outside of the building, reiterating the strong lines of the built forms and accommodating signage.



Undertaken under Sgourakis Architects Pty Ltd

Church of Christ



Type. **Civic**
 Stage. **Completed**
 Engaged For. **Architecture + Design**

Site Area. **2,987 sqm**

This monolithic church in Melbourne's south-east references the scale and presence of traditional church architecture. A curving roof and sculpted concrete form define the exterior, while carefully placed openings modulate light and views. The program includes a 700-seat auditorium, childcare centre, commercial kitchen, café, and offices. Acoustic and technical elements are integrated architecturally, including exposed trusses and custom panels.



Undertaken under Sgourakis Architects Pty Ltd

Gwynne



Type. **Commercial Fit-out**
 Stage. **Completed**
 Engaged For. **Interior Design**

Levels. **5**

An expansive commercial interior fit out spanning 5 floors of a new office building shell. Responding to a complex brief to accommodate the respective needs of eight diverse and exciting companies with a unified design language the project delivers a variety of private and collaborative spaces, comfortable break-out areas and even a luxurious rooftop bar and kitchen taking advantage of the panoramic views over Melbourne.



King Island Bar



Type. **Hospitality Fit-out**
 Stage. **Completed**
 Engaged For. **Interior Design**

This interior captures the spirit of King Island Distillery – Bass Strait through a warm, refined palette of brass, tonal tiles, and rich timber. Layered textures and sculptural details shape an immersive atmosphere, balancing sophistication with a strong sense of place. The design reflects both the island's raw beauty and the distillery's crafted character, inviting moments of connection, celebration, and quiet intensity.





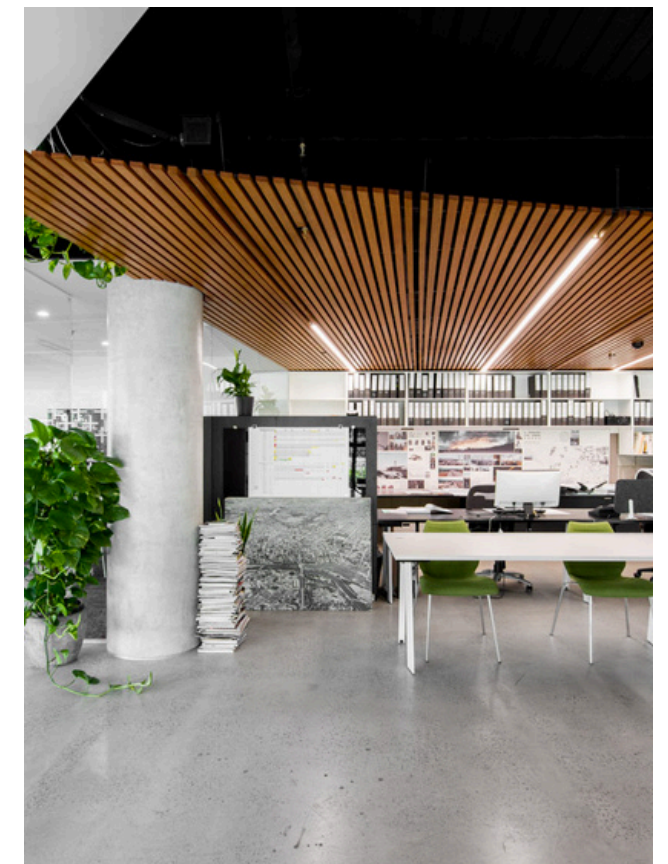
Type. **Civic Fit-out**
Stage. **Completed**
Engaged For. **Interior Design**

Inspired by a gentleman's lounge from days gone by, we reimagined the member's bar as a low-key but luxurious space for club members and their guests. Fusing modern design and a keen sense of the classic, our design concept brings together stone panelling, timber battens and brass detailing. Underfoot, a custom tartan carpet in crisp grey and white gives a heritage feel. New furniture was specified too, themed around classic forms and timeless finishes.



Type. **Commercial Fit-out**
Stage. **Completed**
Engaged For. **Interior Design**

This contemporary studio was designed as a new home for our second-generation architectural practice, blending heritage with future growth. Located beside the Yarra, the space features raw concrete, timber ceilings, and greenery. Flexible desks, custom storage, and space for hand drafting support evolving work styles. Frameless glass enhances openness, while the crosshair motif subtly brands the space.



Undertaken under Sgourakis Architects Pty Ltd

Undertaken under Sgourakis Architects Pty Ltd

SGKS ARCH as Secondary Consultants

SGKS ARCH has been engaged as secondary consultants across a diverse range of projects, from large-scale mixed use developments to Specialist Disability Accommodation retrofits within existing approved plans. In these roles, we provide focused architectural input that complements the work of the lead architect or client team. Our involvement is typically directed toward specific project components, where our expertise in design resolution, technical detailing, or regulatory compliance can add value.

By working in a secondary capacity, we are able to contribute meaningfully without duplicating responsibilities, ensuring that critical aspects of a project are addressed with precision and efficiency. This collaborative approach strengthens the overall delivery of a project, allowing the primary team to draw on specialised knowledge when needed. Whether assisting with documentation packages, refining accessibility strategies, or resolving complex compliance issues, our role is to support and enhance the architectural outcome.

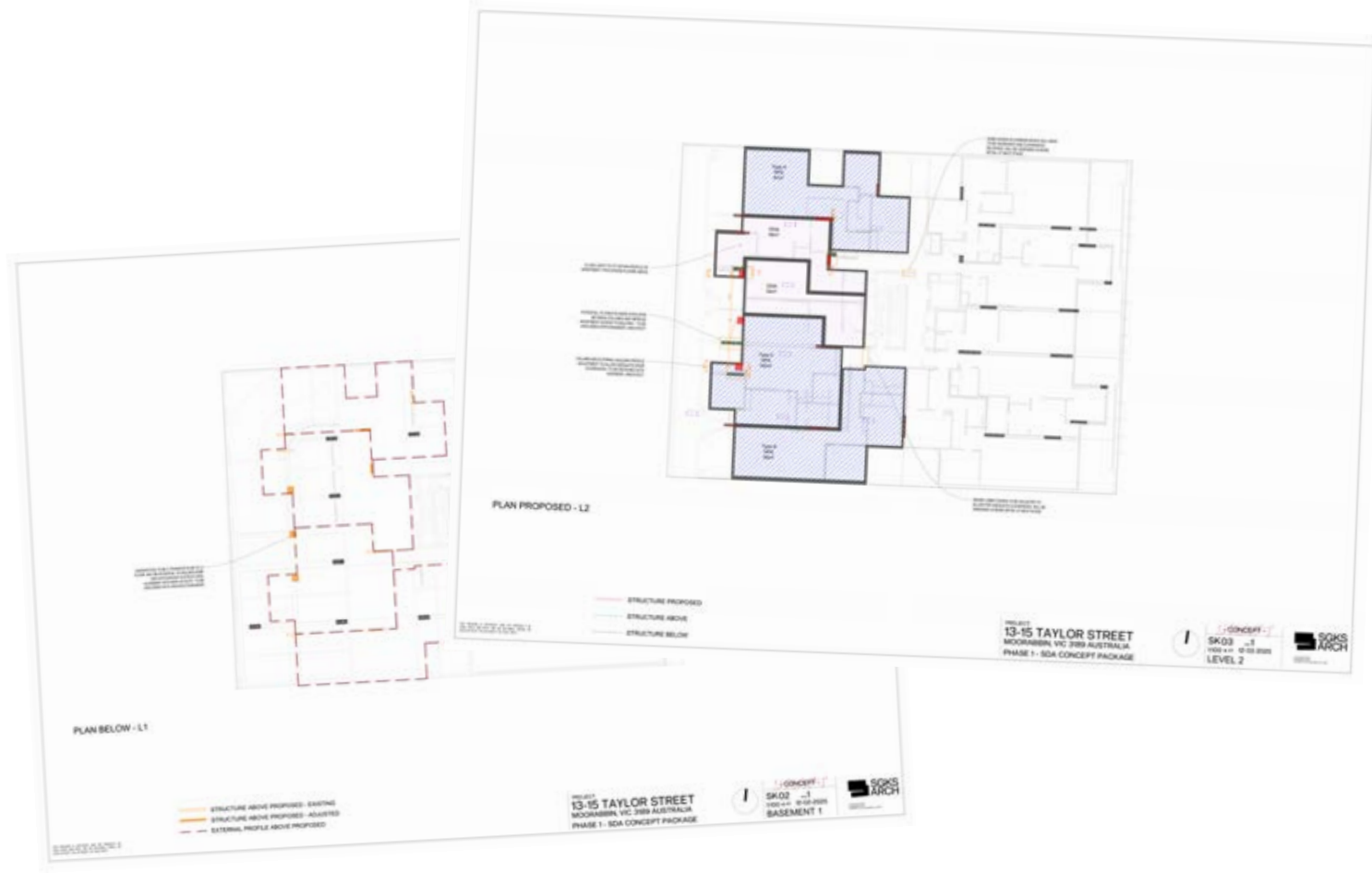
‘SDA demands attention in design, not just compliance. A space where independence, dignity, and life thrive.’



Taylor St

Type. **Multi-Residential**
Stage. **Planning**
Engaged For. **High Physical Support SDA Fit-out**

SGKS ARCH was engaged to convert several apartments within an existing building to meet High Physical Support (HPS) requirements for Specialist Disability Accommodation (SDA). Acting as a sub-consultant to the lead architects, SGKS contributed targeted expertise and practical insight, ensuring the design aligned with compliance standards while maintaining functionality and quality.



Sunshine

Type. **Mixed Use**
Stage. **Completed**
Engaged For. **High Physical Support SDA Fit-out**

When SGKS were engaged the project already had planning approval and endorsed plans within which we successfully redesigned a full residential level to fit 15 High Physical Support apartments. Working collaboratively with the project architects where required we coordinated the certification with an interstate certifier as well coordinating a lease agreement for the client.



Capability Statement

Suite 5, 2-4 Douglas Street, Southbank VIC 3006

Thank you for the opportunity to share our Capability Statement.

studio@sgksarch.com
(+61) 3 9041 0984

Please get in touch at studio@sgksarch.com or drop by our studio to say hello and discuss further.
Explore our full portfolio of work at sgksarch.com

SGKS ARCH

© SGKS ARCH 04-2026

