

Capability Statement  
Commercial + Public



SGKS ARCH



## Who We Are

**‘Designs that demand attention. Delivered to live and endure.’**



SGKS ARCH is a full-service architectural and interior design studio based in South Melbourne. We believe exceptional architecture inspires, connects, and transforms. Under Henry Sgourakis' leadership, our firm is recognized for bespoke, innovative, and sustainable design. Our team of experienced creatives is dedicated to redefining spaces — residential or commercial — through impactful, considered solutions.

Diversity and inclusion are at the heart of our studio. We know that the best ideas emerge from different perspectives, experiences, and voices. By welcoming people of all backgrounds, identities, and abilities, we create an environment where collaboration thrives, and every project reflects empathy, relevance, and depth.

With over 15 years of experience in architecture and development, Henry and his team combine creative vision with strategic insight, delivering projects that are both aesthetically striking and practically executed. SGKS ARCH's involvement across development ensures each project is meticulously realized, accessible, and thoughtfully designed.

Our commitment to excellence has earned a reputation for innovation, precision, and landmark projects. We carefully craft every detail, consistently surpassing client expectations, while cultivating a culture that values people as much as design.

Driven by a legacy of success and a dedication to meaningful, human-centered architecture, SGKS ARCH seeks collaborators who share our passion for transformative, forward-thinking design.

# Who We Are



## Henry Sgourakis

**Architect. Designer. Creative.**

**Founder & Director, SGKS ARCH p/l**

Henry Sgourakis is not your typical architect. With over 15 years leading high-impact projects across architecture, design, and property, he blends creative precision with deep commercial understanding and real-world experience. As the founder and sole director of SGKS ARCH p/l, Henry operates at the intersection of design, strategy, and delivery—bringing bold ideas to life from blueprint to built form.

Educated in architecture, management, and property (B Arch / B ID / M ARCH / Dip Property), Henry's multi-disciplinary background allows him to see beyond aesthetics—he designs for performance, for people, and for place. He's just as comfortable on-site as he is in the studio, having built under his own registration. Henry has extensive experience in delivering Specialist Disability Accommodation around Australia, and contributed expert evidence in both VIS and SDA contexts.

From large-scale residential and mixed-use developments to interiors, commercial spaces, and specialist housing, Henry brings a hands-on, full-spectrum approach. His work includes everything from masterplanning and feasibility to bespoke furniture design and manufacturing. With every project, he brings creativity, commercial clarity, and a relentless commitment to quality.

Known for his ability to solve complex problems, manage diverse stakeholders, and drive results across all stages of a project, Henry's reputation is built on trust, delivery, and design that stands the test of time.

**‘Operating at the intersection of design, strategy, and delivery bringing bold ideas to life from blueprint to built form.’**

# What We Do

## Collaborate

Collaboration is at our core, ego is left at the door. We listen and learn to authentically translate your vision. We strive to gain a genuine understanding of the people behind the project to deliver a unique and robust solution with every opportunity. Our collaborative process ensures that we also bring together the most effective and experienced team to navigate the complexities, whilst making the experience one for you to enjoy.

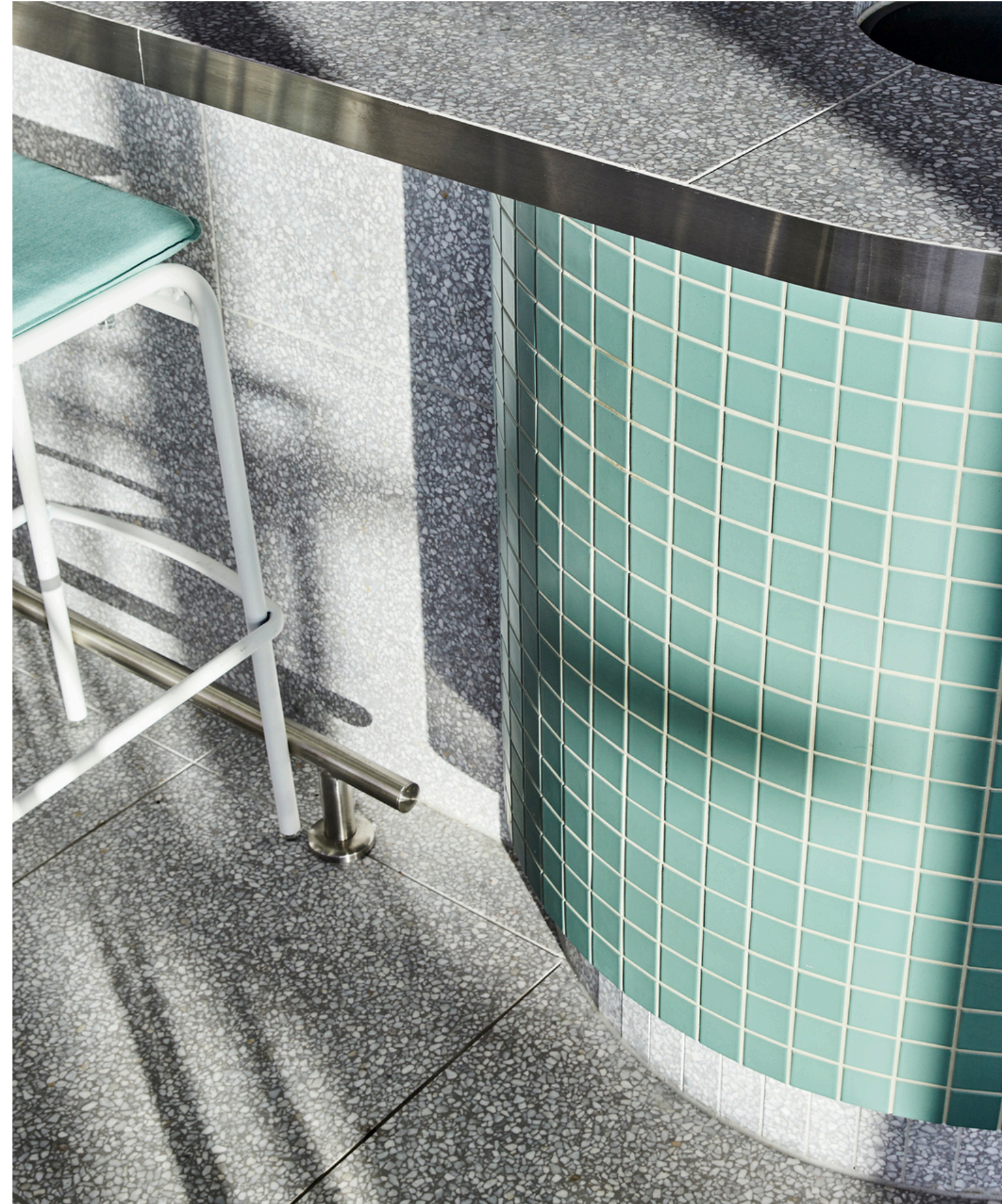
## Craft

We don't just create buildings, we tell stories. Behind every project is a story of craftsmanship that goes beyond the aesthetic. Our principles provide solutions that efficiently resolve design challenges to maximise space, buildability and livability. Sustainability figures prominently, never an afterthought, to ensure we minimise the impact on the environment through design both now and future considerations. We balance fluidity with structure which allows us to negotiate constraints such as budget, schedule and complex site conditions.

## Create

We are a design-driven collective that can innately balance creative with commercial priorities for our clients. Our shared contemporary design and appreciation of historical architecture is what generates thoughtfully considered projects. We design mixed-use, commercial and public projects that make an active contribution to Melbourne's urban fabric. Creativity is fostered in our studio – it is paramount for our clients to be inspired by every interaction

**'We collaborate with purpose, craft with precision, and create with vision.'**



# What We Deliver



We provide tailored solutions across a diverse range of projects, varying in scale and complexity. Our services span the full project lifecycle, including design, development approvals, documentation, and delivery.

## Core Expertise

- Commercial and mixed-use developments
- Small and Large scale public realm projects
- Interior design for all sectors
- Planning and master planning
- Hotels and hospitality
- Medical projects

## Broader Expertise

- Secondary consultants within large scale projects
- Residential: middle to high-end homes, multi-residential projects, and townhouse developments
- Aged care and health facilities
- Social Impact and social housing
- Specialist Disability Accommodation (SDA) / NDIS

## Expert Evidence

We provide specialist expert evidence services, including:

- SDA Independent Compliance Check (As built)
- Landscape & Visual Impact Assessments (LVIA)
- Visual Amenity Evaluations (VAE)
- VCAT evidence

## Development & Advisory

Our practice has a strong history in development management, development plan submissions, and master planning, bridging the gap between design vision and commercial delivery.

**‘A collective united by  
creativity and purpose.’**

# Credentials & Safe Design

## Victorian Government Construction Supplier Register (CSR)

**SGKS ARCH is proudly pre-qualified on the Victorian Government Construction Supplier Register (CSR) in the Architectural category.** This accreditation confirms our demonstrated capability, governance, financial capacity, and compliance with Victorian Government procurement frameworks, enabling streamlined engagement across public sector projects.

CSR pre-qualification is a mandatory requirement for government construction-related services, providing agencies with confidence that SGKS ARCH has already been rigorously vetted and approved to tender.

## CSR Architectural Services Scope

Our CSR registration covers architectural services across all classes of buildings and structures, including:

- **Concept and detailed design**
- **Planning and building permit applications**
- **Tender documentation and tender phase assistance**
- **Construction phase services and contract administration**

Our work demonstrates the ability to operate effectively within complex, regulated environments while maintaining a strong focus on design quality, buildability, and long-term performance.

## Professional Registration & Compliance

To maintain CSR accreditation, SGKS ARCH complies with all mandatory requirements, including:

- **Registered Architectural Practice with the Architects Registration Board of Victoria (ARBV)**
- **An independently assessed Occupational Health & Safety (OHS) Management System aligned with Victorian Government criteria**
- **Ongoing compliance with legislative, professional, and ethical standards**

These credentials confirm our capacity to engage confidently with government clients, consultants, and contractors.

# Trusted and Pre-qualified for Government Projects

## Systems & Delivery Capability

**Project & Information Management:** SGKS ARCH utilises integrated project management and information systems that provide real-time oversight of programme, resources, cost control, and design coordination. Our secure IT infrastructure and robust backup systems support efficient delivery and risk management.

## Quality & Safety Systems

Government-approved Quality Assurance (QA) and OHS systems are embedded across all projects, ensuring consistent delivery outcomes and full alignment with Safe Design principles.

## Safe Design & Health & Safety

Safety in Design is integral to SGKS ARCH's architectural services. We proactively identify and address potential risks at the design stage to reduce hazards during construction, occupation, maintenance, and eventual demolition.

SGKS ARCH understands and fulfils its responsibilities as a designer under Victorian occupational health and safety legislation. We are committed to ensuring, so far as reasonably practicable, that the buildings and structures we design are safe and without risk to the health and safety of those who construct, use, maintain, and interact with them.

Our approach is formalised through a dedicated Safe Design Manual, supported by structured design consultation, continuous improvement processes, and ongoing professional development.

## Environmental Responsibility

SGKS ARCH recognises that responsible environmental practice is fundamental to quality design. We are committed to continually improving our environmental management standards and minimising environmental impact across our operations and projects.

**SGKS ARCH offers clients a low-risk, pre-qualified architectural partner with proven systems, embedded Safe Design expertise, and a strong understanding of public sector procurement, compliance, and delivery requirements.**

**Our CSR status, professional registrations, and robust management frameworks enable efficient engagement and consistently high-quality outcomes aligned with Victorian Government standards.**

# Our Commercial + Public Projects



**Tackling projects of diverse scale and complexity, applying rigorous design process and resolved aesthetic.**

A selection of projects have been chosen that showcase our conceptual, complete and currently active Commercial and Public Projects reflecting our passion for creating bold and redefined spaces.

To view all our projects both Large and Small, please visit our website at [sgksarch.com](http://sgksarch.com)

# Gwynne



An expansive commercial interior fit out spanning 5 floors of a new office building shell. Responding to a complex brief to accommodate the respective needs of eight diverse and exciting companies with a unified design language the project delivers a variety of private and collaborative spaces, comfortable break-out areas and even a luxurious rooftop bar and kitchen taking advantage of the panoramic views over Melbourne.

Type. **Commercial Fit-out**  
Stage. **Completed**  
Engaged For. **Interior Design**



# Church of Christ



This monolithic church in Melbourne's south-east references the scale and presence of traditional church architecture. A curving roof and sculpted concrete form define the exterior, while carefully placed openings modulate light and views. The program includes a 700-seat auditorium, childcare centre, commercial kitchen, café, and offices. Acoustic and technical elements are integrated architecturally, including exposed trusses and custom panels.

Type. **Civic**  
Stage. **Completed**  
Engaged For. **Architecture + Interior Design**



# Kangaroo Ground



Located in Victoria's Kangaroo Ground, this mixed-use hospitality project combines the wonders of a winery with boutique accommodation. The design thoughtfully engages the landscape through a restrained material palette and site-sensitive forms that blend into the natural surroundings. Private villas offer secluded retreats, while an artist's residence enriches the cultural experience.

Type. **Hospitality**  
 Stage. **Design Development**  
 Engaged For. **Architecture + Interior Design**



# Darebin Creative



A collaboration between SGKS, Coree Thorpe, and a team of advisors has reimagined a proposed mixed used commercial park in Thornbury as a place of wonder, creativity, and community. Anchored by a striking three-dimensional artistic treatment of the facade and its surroundings, the design invites exploration, both up close and from afar. A dance studio and café, both open to the public, enrich the space and help establish it as a local cultural hub.

Type. **Civic**  
 Stage. **Design Development**  
 Engaged For. **Architecture + Masterplanning**

Cultural Partnership with Coree Thorpe

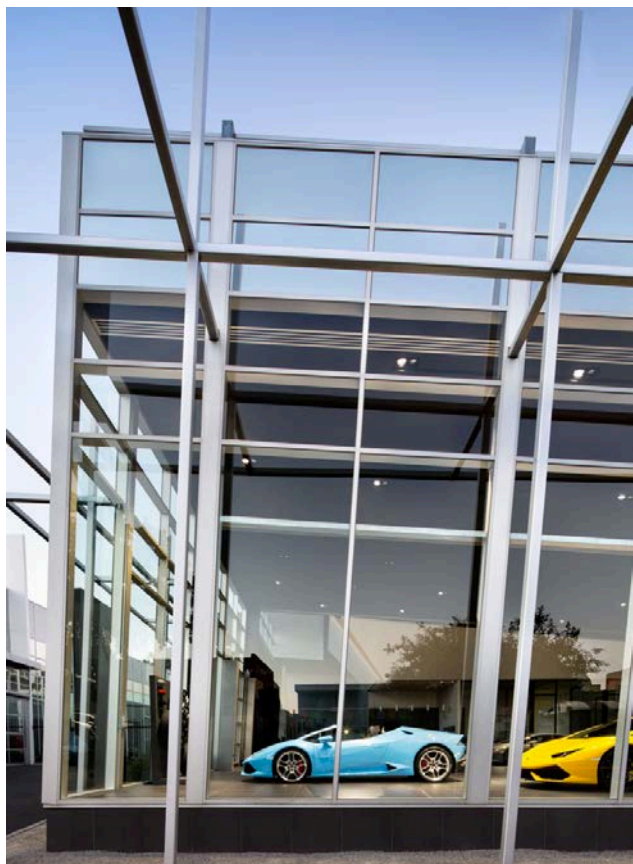


# Lamborghini



To the street, the project presents a sleek combination of glass and steel, its unexpected angularity giving the built form a feeling of movement. The two buildings share design elements, but they each have a distinct character. A lightweight framework of beams and pillars traces the outside of the building, reiterating the strong lines of the built forms and accommodating signage.

Type. **Commercial**  
 Stage. **Completed**  
 Engaged For. **Architecture**



# Civic Pavilion



This civic sporting facility, designed for regional Victoria, brings together a 50-metre Olympic swimming pool, an indoor basketball show court, gymnasium and café within a single, highly legible public building.

The architecture adopts a refined and pragmatic built form that responds to its rural context. Carefully articulated volumes, a restrained material palette and a considered encasement of the primary spaces introduce layers, thresholds and moments of intrigue, elevating what is typically a utilitarian public pool into a calm, durable and engaging civic landmark.

Type. **Civic**  
 Stage. **Design Development**  
 Engaged For. **Architecture**

Designer: Andrew Gallo



# Latrobe Golf Club



Inspired by a gentleman's lounge from days gone by, we reimagined the member's bar as a low-key but luxurious space for club members and their guests. Fusing modern design and a keen sense of the classic, our design concept brings together stone panelling, timber battens and brass detailing. Underfoot, a custom tartan carpet in crisp grey and white gives a heritage feel. New furniture was specified too, themed around classic forms and timeless finishes.

Type. **Interi Fit-out**  
 Stage. **Completed**  
 Engaged For. **Interior Design**



# Rubicon



A mixed-use project combining 17 apartments and a childcare centre, the separate uses have been meticulously integrated into a unified built form such that neither use must sacrifice amenity for the other. Issues of privacy, ventilation and natural light are thoughtfully accommodated into a cohesive form without compromise; achieving the much needed density within the accessible and increasingly sought after area all the while maintaining and even enhancing the domestic suburban character.

Type. **Mixed Use + Childcare**  
 Stage. **Planning Permit**  
 Engaged For. **Architecture + Interior Design**



# South Fremantle



Sited on the dynamic edge between land and sea this building complex traces the similarly dynamic relationship between humanity and water. The extensive program includes a spa, gym, kiosk and various pools catering to different forms of interaction with water, all housed within an architecture formed with ribbons figuratively raised from the land itself, webbed with an expressed, ordering grid.

Type. **Civic**  
 Stage. **Design Development**  
 Engaged For. **Architecture**

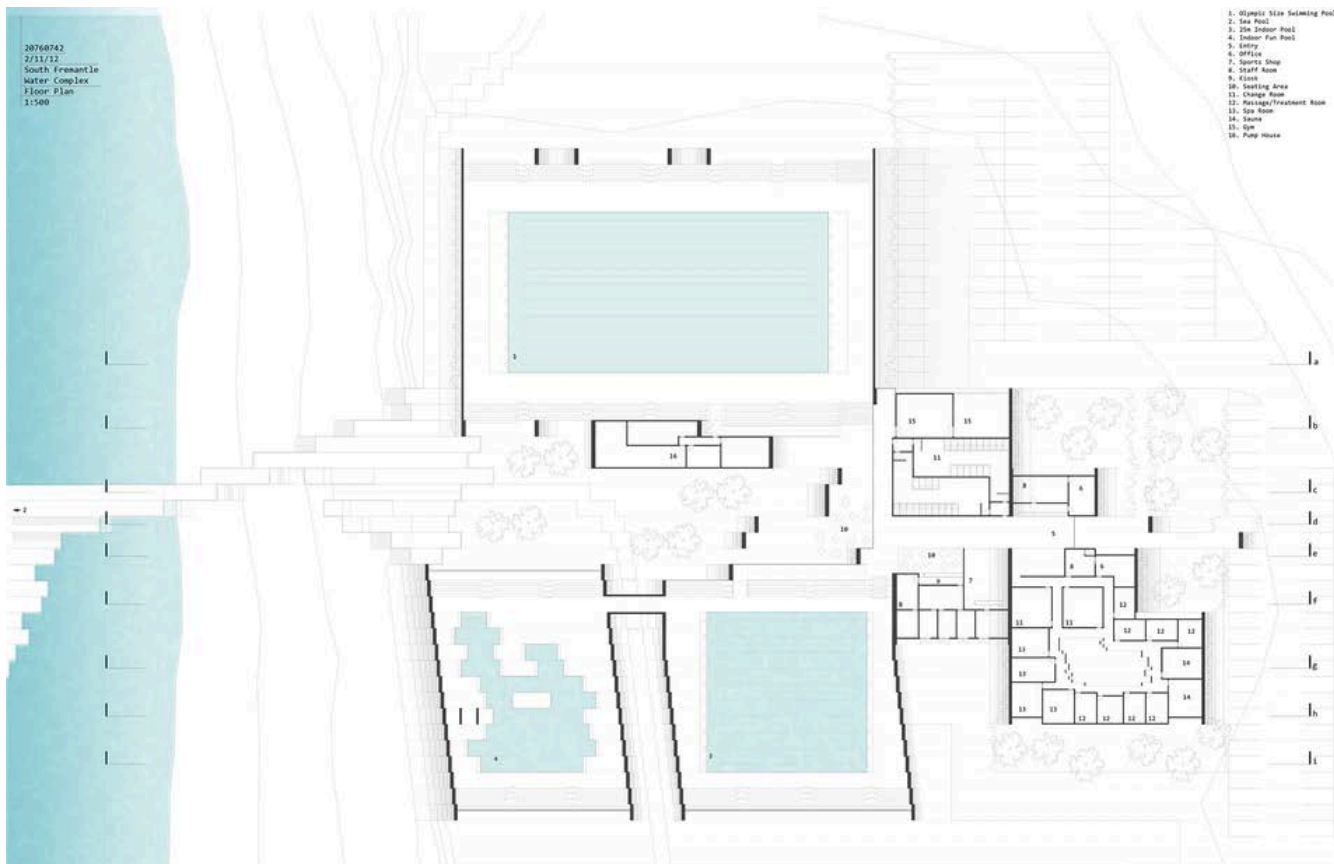
Designer: Sam Butcher

# Lake Tyers



This mixed-use project combines masterplanning and architecture to revitalize a beloved lakeside pub with sensitive refurbishment and rammed earth additions. It introduces short-stay holiday accommodations and converts a lakefront carpark into a public amenity with a beach and grassed areas. This redesign breathes new life into an underutilized space, enhancing community access and surrounding views. The project balances preserving local character while activating the waterfront.

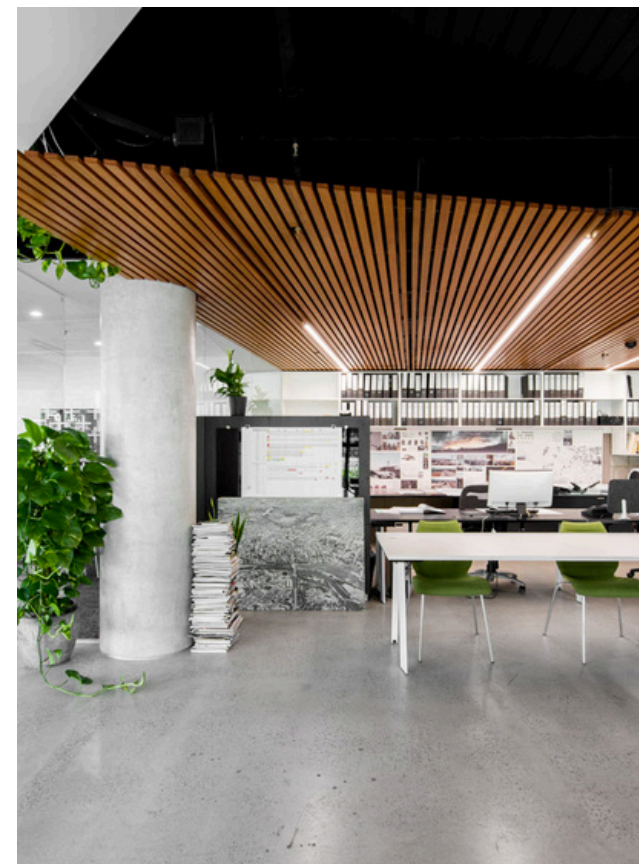
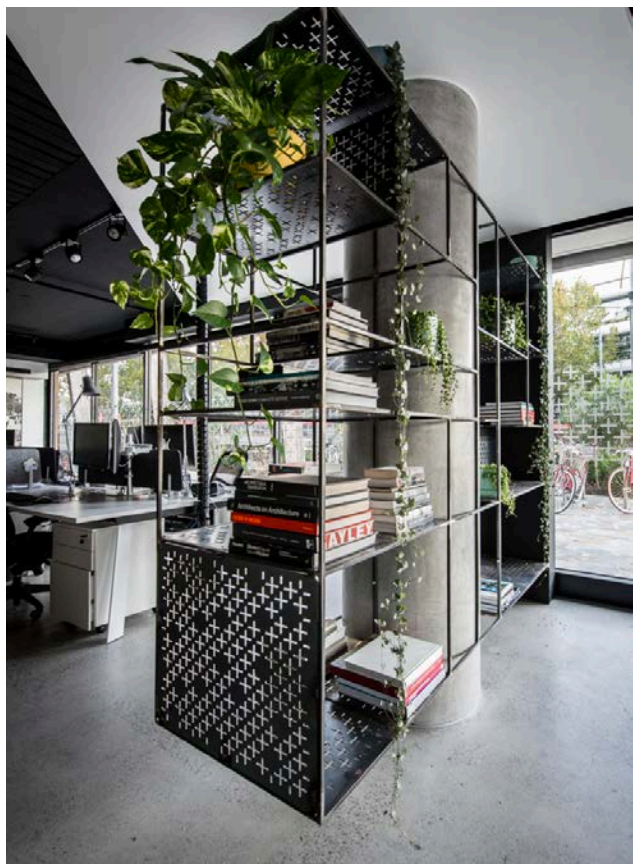
Type. **Civic**  
 Stage. **Design Development**  
 Engaged For. **Architecture + Masterplanning**



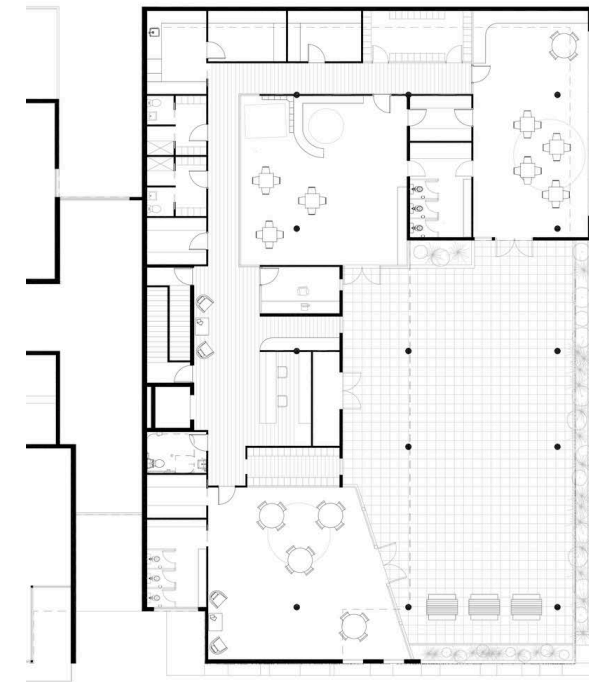


This contemporary studio was designed as a new home for our second-generation architectural practice, blending heritage with future growth. Located beside the Yarra, the space features raw concrete, timber ceilings, and greenery. Flexible desks, custom storage, and space for hand drafting support evolving work styles. Frameless glass enhances openness, while the crosshair motif subtly brands the space.

Type. **Commercial Fit-out**  
 Stage. **Completed**  
 Engaged For. **Interior Design**



# Austral



This mixed-use project combines masterplanning and architecture to revitalize a beloved lakeside pub with sensitive refurbishment and rammed earth additions. It introduces short-stay holiday accommodations and converts a lakefront carpark into a public amenity with a beach and grassed areas. This redesign breathes new life into an underutilized space, enhancing community access and surrounding views. The project balances preserving local character while activating the waterfront.

Type. **Childcare**  
 Stage. **Design Development**  
 Engaged For. **Architecture + Interior Design**



# Capability Statement Commercial + Public

From the team here at SGKS ARCH, thank you for the opportunity to provide our Capability Statement. We welcome you to view all our projects at [sgksarch.com](https://sgksarch.com) and come by our studio to say hello!

[studio@sgksarch.com](mailto:studio@sgksarch.com)  
(+61) 3 9041 0984

