

Capability Statement Residential

SGKS ARCH



Who We Are

‘Designs that demand attention. Delivered to live and endure.’



SGKS ARCH is a full-service architectural and interior design studio based in South Melbourne. We believe exceptional architecture inspires, connects, and transforms. Under Henry Sgourakis' leadership, our firm is recognised for bespoke, innovative, and sustainable design. Our team of experienced creatives is dedicated to redefining spaces — residential or commercial — through impactful, considered solutions.

Diversity and inclusion are at the heart of our studio. We know that the best ideas emerge from different perspectives, experiences, and voices. By welcoming people of all backgrounds, identities, and abilities, we create an environment where collaboration thrives, and every project reflects empathy, relevance, and depth.

With over 15 years of experience in architecture and development, Henry and his team combine creative vision with strategic insight, delivering projects that are both aesthetically striking and practically executed. SGKS ARCH's involvement across development ensures each project is meticulously realized, accessible, and thoughtfully designed.

Our commitment to excellence has earned a reputation for innovation, precision, and landmark projects. We carefully craft every detail, consistently surpassing client expectations, while cultivating a culture that values people as much as design.

Driven by a legacy of success and a dedication to meaningful, human-centered architecture, SGKS ARCH seeks collaborators who share our passion for transformative, forward-thinking design.

Who We Are



Henry Sgourakis

Architect. Designer. Creative.
Founder & Director, SGKS ARCH p/l

Henry Sgourakis is not your typical architect. With over 15 years leading high-impact projects across architecture, design, and property, he blends creative precision with deep commercial understanding and real-world experience. As the founder and sole director of SGKS ARCH p/l, Henry operates at the intersection of design, strategy, and delivery—bringing bold ideas to life from blueprint to built form.

Educated in architecture, management, and property (B Arch / B ID / M ARCH / Dip Property), Henry's multi-disciplinary background allows him to see beyond aesthetics—he designs for performance, for people, and for place. He's just as comfortable on-site as he is in the studio, having built under his own registration. Henry has extensive experience in delivering Specialist Disability Accommodation around Australia, and contributed expert evidence in both VIS and SDA contexts.

From large-scale residential and mixed-use developments to interiors, commercial spaces, and specialist housing, Henry brings a hands-on, full-spectrum approach. His work includes everything from masterplanning and feasibility to bespoke furniture design and manufacturing. With every project, he brings creativity, commercial clarity, and a relentless commitment to quality.

Known for his ability to solve complex problems, manage diverse stakeholders, and drive results across all stages of a project, Henry's reputation is built on trust, delivery, and design that stands the test of time.

‘Operating at the intersection of design, strategy, and delivery bringing bold ideas to life from blueprint to built form.’

What We Do

Collaborate

Collaboration is at our core, ego is left at the door. We listen and learn to authentically translate your vision. We strive to gain a genuine understanding of the people behind the project to deliver a unique and robust solution with every opportunity. Our collaborative process ensures that we also bring together the most effective and experienced team to navigate the complexities, whilst making the experience one for you to enjoy.

Craft

We don't just create buildings, we tell stories. Behind every project is a story of craftsmanship that goes beyond the aesthetic. Our principles provide solutions that efficiently resolve design challenges to maximise space, buildability and livability. Sustainability figures prominently is never an afterthought ensuring a minimal impact on the environment through design both now and future considerations. We balance fluidity with structure which allows us to negotiate constraints such as budget, schedule and complex site conditions.

Create

We are a design-driven collective that can innately balance creative with commercial priorities for our clients. Our shared contemporary design and appreciation of historical architecture is what generates thoughtfully considered projects. We design mixed-use, commercial and public projects that make an active contribution to Melbourne's urban fabric. Creativity is fostered in our studio – it is paramount for our clients to be inspired by every interaction

'We collaborate with purpose, craft with precision, and create with vision.'



What We Deliver



We provide tailored solutions across a diverse range of projects, varying in scale and complexity. Our services span the full project lifecycle, including design, development approvals, documentation, and delivery.

Core Expertise

- Middle to high-end homes
- Interior Design across all sectors
- Specialist Disability Accommodation (SDA) / NDIS

Broader Expertise

- Multi-residential projects, and townhouse developments
- Commercial and mixed-use developments
- Small and Large scale public realm projects
- Aged care and health facilities
- Social Impact and social housing
- Hotels and hospitality
- Medical projects
- Planning and master planning
- Secondary consultants within large scale projects

Expert Evidence

We provide specialist expert evidence services, including:

- SDA Independent Compliance Check (As built)
- Landscape & Visual Impact Assessments (LVIA)
- Visual Amenity Evaluations (VAE)
- VCAT evidence

Development & Advisory

Our practice has a strong history in development management, development plan submissions, and master planning, bridging the gap between design vision and commercial delivery.

Credentials and Pre-Qualifications

SGKS ARCH is proudly prequalified on the Victorian Government's Construction Supplier Register (CSR), reflecting our proven capability, commitment to Safe Design compliance, and experience in delivering architectural services to the highest standards. This accreditation provides government agencies with confidence that SGKS ARCH meets all required legislative, quality, and procedural benchmarks, enabling streamlined engagement across a broad range of public sector projects.

**'A collective united by
creativity and purpose.'**

Client Voice

Barkly | Wategos | L'avenir

"We have worked with Henry across three residential projects, and his work continues to impress us with its brilliance and depth. Most recently, he designed the largest project we've ever embarked on, and the results have been nothing short of extraordinary.

Henry was able to translate our vision into a design that not only meets but exceeds expectations. His work is exceptionally well-considered, detailed, and thorough, reflecting a deep understanding of both form and function, and he is passionate about design, and dedicated to his craft. Every element of our new home design felt purposeful and aligned perfectly with our brief.

Beyond his creative talent, Henry's professionalism and expertise in navigating the planning process were invaluable. He made what could have been a daunting process remarkably smooth, handling complexities with ease and ensuring everything stayed on track.

The final result is a home that we are incredibly proud of – a space that is as beautiful as it is practical for our family"

Residential Architecture + Interior

Jordy Catalano – Owner

Malvern

"Our block presented some unique challenges, with a noticeable fall from front to rear and laneway access at the back. SGKS ARCH embraced these conditions, using them to inform a clever and functional layout. The inclusion of a lower-level garage with elevated living spaces felt like a natural and highly effective response to the site.

We had asked for a design that felt minimal without being harsh or overly contemporary, and we trusted SGKS ARCH to interpret that brief. The result was a thoughtful, refined concept that struck exactly the right balance, something we likely couldn't have articulated or achieved on our own...The end result was outstanding, and we're genuinely glad we chose to work with Henry and the Team at SGKS ARCH."

Residential Architecture

Michael Carollo – Owner



L'avenir

Our Residential Projects



‘Tackling projects of diverse scale and complexity, applying rigorous design process and resolved aesthetic.’

A selection of projects have been chosen that showcase our current and completed residential projects reflecting our passion for creating bold and redefined spaces.

To view all our projects both Large and Small, please visit our website at sgksarch.com

Park St



Park St is a colourful love letter to St Kilda West, reimagining two tired Art Deco flats into a radiant, contemporary family home. Blending global influences with the suburb's eclectic reality, the design strays from normality through texture, form and colour, creating an adventurous retreat full of personality and flair.

Shortlisted 'Habitus House of the Year' 2025
Shortlisted 'IDEA Awards for Colour' 2025

Type. Residential
Stage. Completed
Engaged For. Architecture + Interior Design



East Melbourne



This home renovation exudes refined tactile luxury with concrete finished walls, simple yet substantial finishes, and warm textures. Fit for the makings of a modern family home, the renovation extends a 1900 Federation Style house, now boasting an expansive living wing and rooftop terrace fit for entertaining.

Type. **Residential**
Stage. **Tender Documentation**
Engaged For. **Architecture + Interior Design**

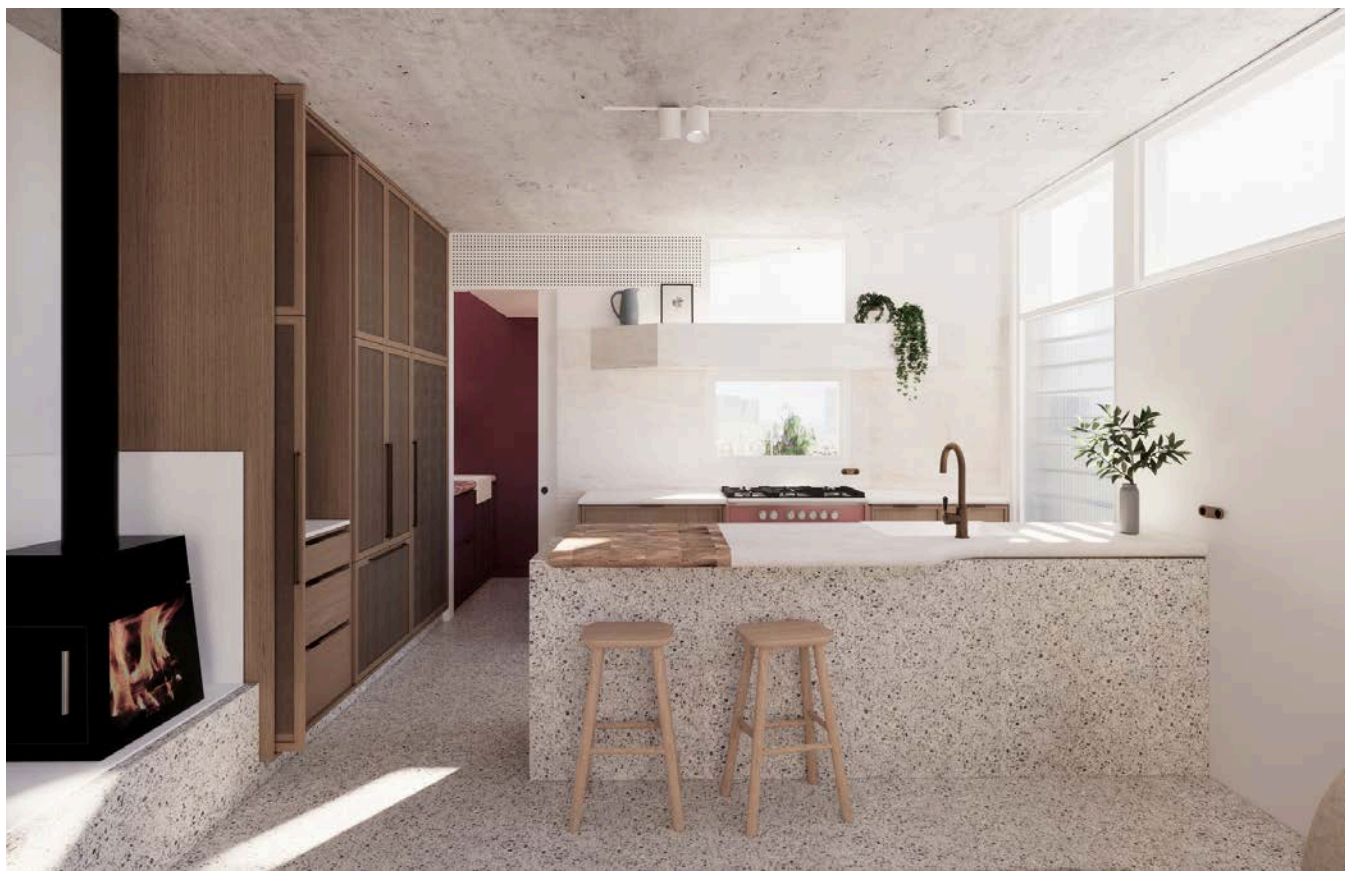


Gordan's Way



A delicate extension on a tight inner-Melbourne site, this project respects the original weatherboard cottage by positioning the new addition at the rear, forming a functional, light-filled courtyard at the home's centre. Each interior space bursts with a different colour, reflecting the client's eclectic style and creating a playful yet cohesive atmosphere that contrasts gently with the restrained exterior.

Type. **Residential**
Stage. **Construction Documentation**
Engaged For. **Architecture + Interior Design**



Sorrento



Perched on a steep coastal site overlooking Bass Strait, Sorrento House balances a complex brief, tight budget, and challenging terrain to comfortably house four generations. A curved rammed earth wall conceals the entry, leading to a dramatic central void that connects two distinct volumes. The lower level is embedded into the slope for shelter and privacy, while the upper level, wrapped in charred timber, opens to ocean views and a north-facing terrace, blending indoor and outdoor living.

Shortlisted 'Habitus House of the Year' 2025
Shortlisted 'IDEA Awards for Colour' 2025

Type: **Residential**
Stage: **Completed**
Engaged For: **Architecture + Interior Design**



L'Avenir



This completed residential extension and retrofit of a heritage home blends modern design with traditional materials. The extension features exposed concrete ceilings and formed skylights that bring natural light into the space. A chunky rendered form contrasts with weathered timber cladding, creating a striking contrast in materiality.

Type. **Residential**
Stage. **Completed**
Engaged For. **Architecture + Interior Design**



Woodland II



Woodland House II is a study in scale and proportion, utilising access to natural light and internal volumes to amplify and counter the traditional home. An increasing challenge for residential architecture globally, smaller and more compact sites pose associated complexities with achieving and fulfilling the intricacies of contemporary briefs.

Shortlisted 'Habitus House of the Year' 2025
Shortlisted 'IDEA Awards for Colour' 2025

Type. **Residential**
Stage. **Completed**
Engaged For. **Architecture + Interior Design**



Red Hill



This modern country home, with its rammed earth walls and expansive windows, invites the outdoors in, offering sweeping ocean views. Subtle moments of luxury are woven through the design, with carefully chosen pops of color and natural textures. The open layout fosters a sense of space and tranquility, while the design's thoughtful integration of rustic elements and modern finishes creates a refined yet relaxed retreat, perfectly attuned to its stunning coastal setting.

Type. **Residential**
Stage. **Conceptual**
Engaged For. **Architecture + Interior Design**



Malvern



Located in the heart of Melbourne, this residential project is designed for a family, balancing clarity of form with a calm, grounded presence. The architecture is defined by clean geometry, with the sloping site used to create separation across levels and a considered spatial hierarchy. Externally, a restrained palette of brick and soft finishes allows integrated planter boxes and vegetation to shape the building's identity. Internally, the mood shifts to a more expressive and playful atmosphere, with darkened bronze joinery, natural stone, and layered colour tones introducing warmth, depth, and variation.

Type. **Residential**
Stage. **Design Development**
Engaged For. **Architecture + Interior Design**



Black Rock



A narrow contemporary home set within a coastal Melbourne suburb, its architecture balances raw materiality and soft natural expression. Concrete planes and bold contemporary forms create a sculptural, minimalist presence, contrasted by lush, layered vegetation that softens the façade and grounds the building within its landscape.

The interior opens itself to the exterior, where raw, tactile finishes merge with rich, warm tones to create a bold yet highly liveable space.

Type. **Residential**
Stage. **Design Development**
Engaged For. **Architecture + Interior Design**



Capability Statement Residential

From the team here at SGKS ARCH, thank you for the opportunity to provide our Capability Statement. We welcome you to view all our projects at sgksarch.com and come by our studio to say hello!

studio@sgksarch.com
(+61) 3 9041 0984

